



Maximizing Tenant Satisfaction with High-Performance Industrial Systems: A Solutions Guide



In today's competitive industrial real estate market, **tenant satisfaction is paramount**. High-performance industrial systems play a crucial role in achieving this goal by enhancing operational efficiency, safety, and overall tenant experience.

CMH Industrial Systems™, based in Richmond, Virginia, specializes in providing such high-performance solutions, including the installation and maintenance of high-speed industrial doors, Rollup Doors, Rolling steel doors, Sectional Doors, Bollards, and Hollow Metal Doors.

We are not just a provider of industrial doors; we are a strategic partner offering industry knowledge and experience to solve unique challenges in commercial operations. Our team collaborates with clients to develop effective plans tailored to specific business needs, ensuring that the right solutions are implemented for optimal performance.

Partnering with CMH Industrial Systems™ can help you elevate your property management game and keep your tenants thrilled to stay under your roof

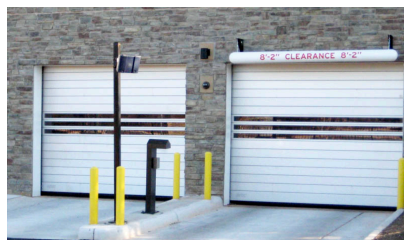
Embrace High-Speed & Rollup Doors That Combine Durability and Convenience

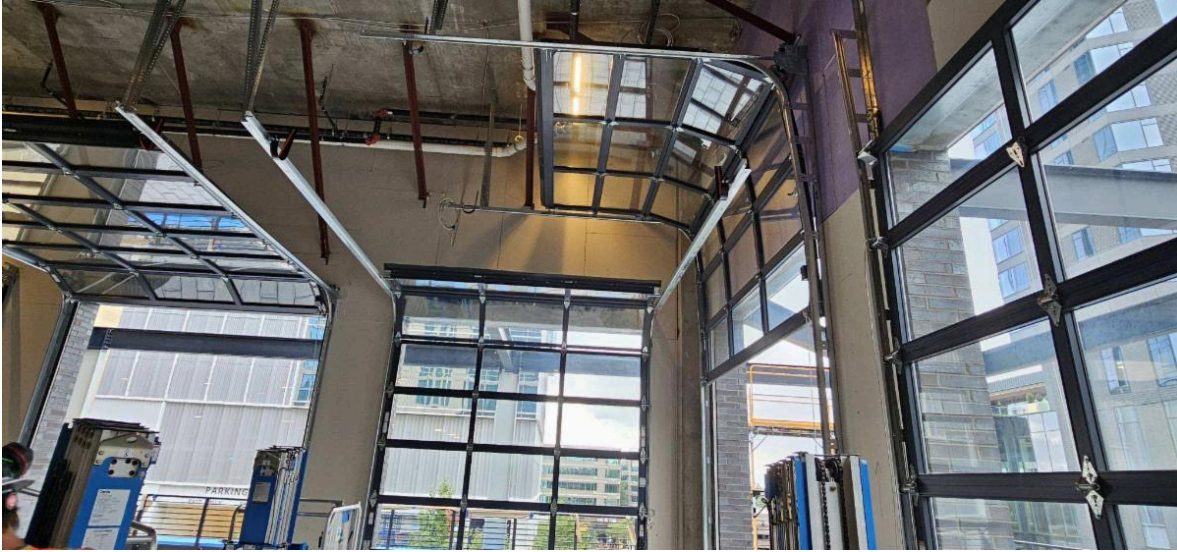
High-speed and rollup doors are game-changers for industrial facilities looking to optimize performance and tenant satisfaction. These advanced doors offer a combination of durability, convenience, and efficiency, making them a preferred choice for warehouses, distribution centers, and manufacturing plants.

Key Benefits of High-Speed & Rollup Doors

- **Rapid Operation**
- **Enhanced Durability**
- **Energy Efficiency**
- **Improved Safety & Security**
- **Low Maintenance**

By investing in high-performance doors like those offered by **CMH Industrial Systems**, property owners and facility managers can enhance operational efficiency, reduce downtime, and ultimately create a more tenant-friendly environment.





Enhanced Security Systems for Tenant and Employee Peace of Mind

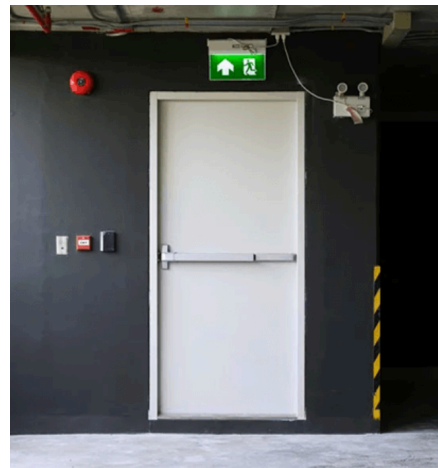
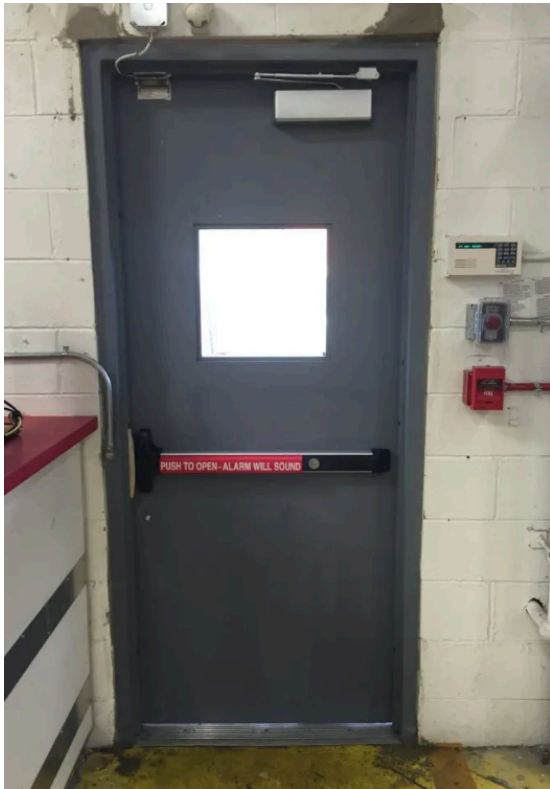
Security is a top priority for industrial properties, as tenants require safe and well-protected facilities for their operations. Implementing high-performance security solutions, such as **hollow metal doors**, access control systems, and reinforced entry points, can significantly improve tenant satisfaction while safeguarding employees and assets. Here's why they are an ideal choice:

- **Increased Strength & Durability**
- **Fire & Smoke Resistance**
- **Customizable Security Features**
- **Low Maintenance & Longevity**

In addition to hollow metal doors, industrial property owners can further enhance security with:

- **Access Control Systems** – Keycard access, biometric authentication, and keypad entry ensure that only authorized personnel can enter restricted areas.
- **Surveillance & Monitoring** – High-resolution security cameras and motion sensors help deter theft and vandalism while maintaining a secure work environment.
- **Emergency Exit Solutions** – Properly installed panic hardware and fire exit doors provide safe egress during emergencies, improving overall safety compliance.

CMH Industrial Systems helps industrial property owners create a safer, more secure environment—ultimately fostering trust and long-term tenant retention.

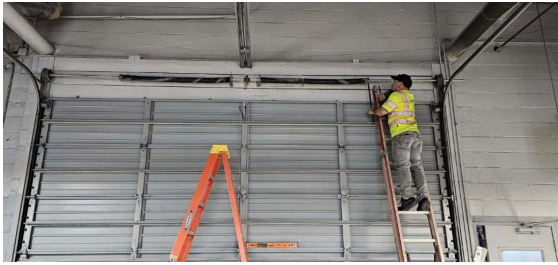


The Key to Long-Term Satisfaction: PM

Preventative maintenance is a proactive approach that ensures industrial systems, such as doors, docks, and security features, remain in optimal condition.

Instead of waiting for equipment failures that can lead to costly downtime and frustrated tenants, implementing ***a routine maintenance plan helps prevent unexpected disruptions***, extends the lifespan of equipment, and improves overall safety.

Equipment Maintenance records Worksheet	Customer Name: _____		
	Location _____		
	Service Date _____		
	Position # _____		
	Manufacture _____		
	Model _____		
	Power (V/Ph) _____		
Clean debris from all units, Lube all applicable parts, test after each inspection			
Door Inspection	GOOD	BEFORE SERVICE	BEFORE SERVICE
Panel Assembly	GOOD	BEFORE SERVICE	BEFORE SERVICE
Bottom Bar/ Safety Edge	GOOD	BEFORE SERVICE	BEFORE SERVICE
Track/Covers	GOOD	BEFORE SERVICE	BEFORE SERVICE
Safeties (Photo-eyes, reversing edge, etc.)	GOOD	BEFORE SERVICE	BEFORE SERVICE
Springs / Spring Barrel	GOOD	BEFORE SERVICE	BEFORE SERVICE
Seals	GOOD	BEFORE SERVICE	BEFORE SERVICE
Rollers	GOOD	BEFORE SERVICE	BEFORE SERVICE
Electrical components and Activations	GOOD	BEFORE SERVICE	BEFORE SERVICE
Cables/ Straps / Belts	GOOD	BEFORE SERVICE	BEFORE SERVICE
Loading dock Inspection			
Deck and Lip	GOOD	BEFORE SERVICE	BEFORE SERVICE
Seals	GOOD	BEFORE SERVICE	BEFORE SERVICE
Hardware	GOOD	BEFORE SERVICE	BEFORE SERVICE
Welds	GOOD	BEFORE SERVICE	BEFORE SERVICE
Cylinders/ hoses/fittings	GOOD	BEFORE SERVICE	BEFORE SERVICE
Sub frame	GOOD	BEFORE SERVICE	BEFORE SERVICE
Fluids	GOOD	BEFORE SERVICE	BEFORE SERVICE
Electrical components	GOOD	BEFORE SERVICE	BEFORE SERVICE
Control Panel	GOOD	BEFORE SERVICE	BEFORE SERVICE
Bumpers	GOOD	BEFORE SERVICE	BEFORE SERVICE
Truck restraints/ Wheel Checks Inspection			
Concrete/anchors	GOOD	BEFORE SERVICE	BEFORE SERVICE
Cylinders/ hoses/fittings	GOOD	BEFORE SERVICE	BEFORE SERVICE
Electrical components	GOOD	BEFORE SERVICE	BEFORE SERVICE
Lights/signs	GOOD	BEFORE SERVICE	BEFORE SERVICE
Control Panel	GOOD	BEFORE SERVICE	BEFORE SERVICE
Notes			



Key Benefits of Preventative Maintenance

- Minimizes Downtime & Disruptions
- Extends Equipment Lifespan
- Enhances Safety & Compliance
- Improves Energy Efficiency
- Reduces Emergency Repair Costs

Key Industrial Systems That Require Preventative Maintenance

- **High-Speed & Rollup Doors** – Inspecting for worn-out seals, misaligned tracks, and motor function ensures smooth operation.
- **Loading Docks & Levelers** – Regular lubrication, adjustments, and safety checks keep these systems reliable for heavy-duty use.
- **Hollow Metal & Security Doors** – Checking hinges, locks, and fire ratings prevents security vulnerabilities.
- **Mechanical & Electrical Access Systems** – Ensuring proper function of keycard access, automatic openers, and alarms safeguards tenant security.

Investing in High-Performance Industrial Systems for Long-Term Success

Maximizing tenant satisfaction in industrial properties requires a strategic approach to efficiency, security, and reliability. By implementing high-performance industrial systems, such as **high-speed doors, hollow metal security doors, and preventative maintenance** programs, property owners can create a safe, efficient, and tenant-friendly environment.


CMH Industrial Systems stands as a trusted partner in delivering customized solutions that enhance security, streamline operations, and reduce downtime. With expert guidance and proactive maintenance services, industrial facility managers can ensure their properties remain functional, compliant, and appealing to long-term tenants.

By investing in durable, energy-efficient, and well-maintained systems, property owners not only improve daily operations but also increase tenant retention, reduce costs, and boost overall property value.

Get Started with CMH Industrial Systems Today

Whether you need **high-performance doors, security enhancements, or a preventative maintenance plan**, **CMH Industrial Systems** is here to help. Contact us today to discuss your facility's needs and discover how our expert solutions can enhance your industrial property.

 Call us at: **(804)400-0320**

 Email us at: **CMHindustrial2209@gmail.com**

 Visit our website: **cmhindustrial.com**

Let **CMH Industrial Systems** be your trusted partner in optimizing your industrial property for efficiency, security, and long-term success!

Visit our Website



Explore Our Social Media

Share This Email Share This Email Share This Email



How did you like this email?



CMH Industrial Systems | 1217 School St | Richmond, VA 23220 US

[Unsubscribe](#) | [Update Profile](#) | [Constant Contact Data Notice](#)



Try email marketing for free today!